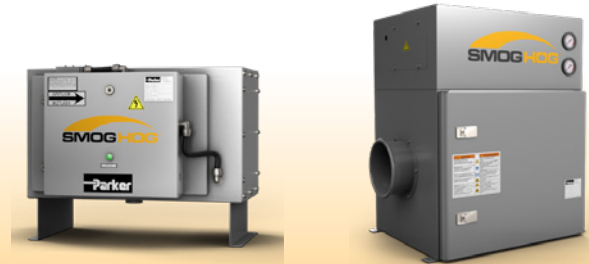


At Parker we give you options and will not force-fit an Air Pollution Control product into your application. We have solutions for all types of applications, whether it is smoke, fume or mist.

Contact us today to see what type of collector is right for your application.

Product Comparison



ESP Collectors

Primary Advantages

- Low energy consumption, no barrier filtration for static pressure to build
- No replacement filters, collection cells can be washed and reused
- Collect wet or dry particulates
- High fractional efficiencies
- Single pass – 94%
- Double Pass – 98%

Primary Disadvantages

- Internal component cleaning is required

Media Collectors

Primary Advantages

- Long filter life in the right application
- Secondary filter options provide up to 99.97% @ 0.3 micron efficiency levels
- Optional touch screen optimizes system control and airflow performance

Primary Disadvantages

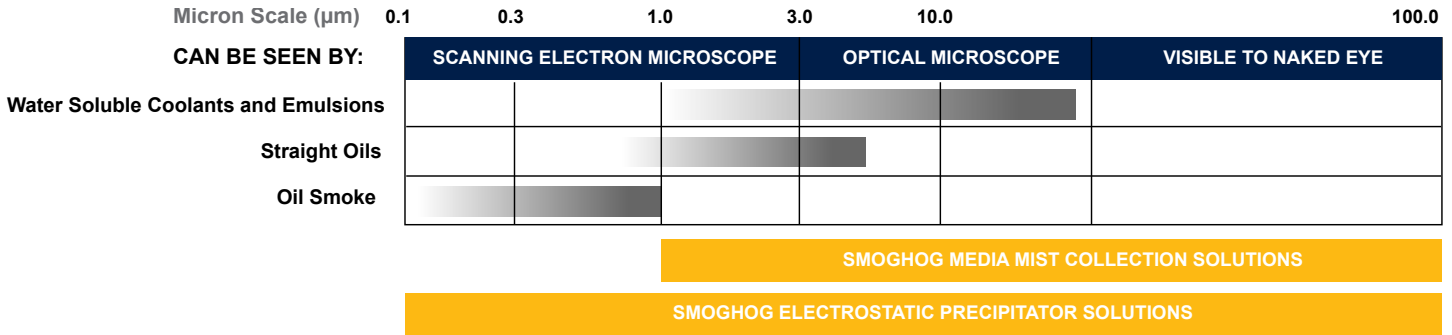
- Filter disposal replacement is required

	SmogHog® Electrostatic Precipitator (ESP) Collector	SmogHog® Peach® Saturated Depth Coalescing™ Media Collector
Technology Type	Static electric charge applied to mist/fume/smoke particles	Coalescing filters used to agglomerate mist into larger particles for drainage
Performance/Particulate Removal	94% - 99%	94% - 99.97% @ 0.30m
Maintenance	Collection Cell Cleaning	Filter Replacement
Frequency of Changeout/Service	1 – 6 Months	1 – 5 Years
Cost of Changeout/Service	0-\$	\$\$ - \$\$\$
Type of Pollutant	Dirty Greasy Smoky Residue that does not run/drain	Low Viscosity Cutting Fluid that Can Run/Drain
Application Recommendations	Cold Heading, Thread Rolling, High Viscosity Coolant Mist, Lubrication, Smoke, Other Mists	Water Based Some Oil Based CNC Machining, Screw Machining
Temperature Rating	130° F	180° F



Key Differentiators

ESP or Media Technology?



When to Use ESP or Media Technology

ESP

- Casting
- Centerless Grinding
- CNC Machining
- Cold Heading
- Industrial Food (Frying/Smoking)
- Restaurants
- Die Casting
- Flame Cutting
- Forging
- Heat Treating
- Gear Cutting
- Induction Heating
- Lathe / Mill / Drill
- Metal Quenching
- Plastic Extruding
- Plastic Processing
- Screw Machining
- Rubber Forming
- Soldering
- Thread Rolling
- Vacuum Pumps
- Wave Soldering
- Welding (Oily)
- Wet Grinding
- Wire Drawing

MEDIA

- Water-Based Coolant CNC Machining
- Oil-Based Coolant CNC Machining
- Screw Machining
- Centerless Grinding
- Gear Cutting
- Lathe / Mill / Drill
- Wet Grinding

